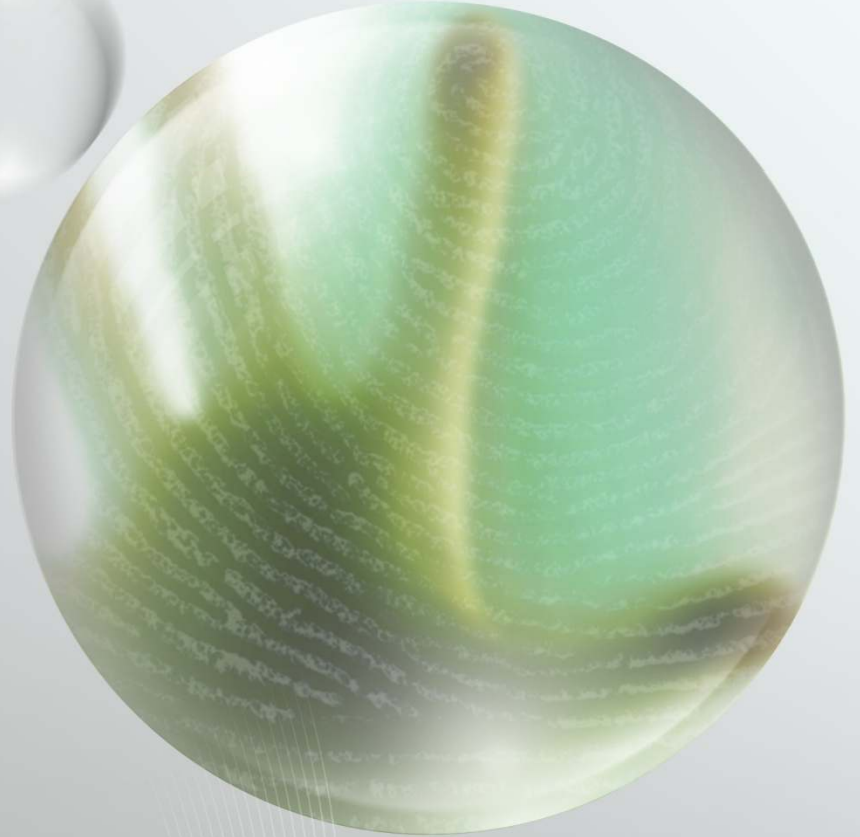


# **Software**

Fingerprint Total Solution Provider

## **Fingerprint Authentication Solution**



# Software

## ● IZZIX Secure SE

*Fingerprint Authentication PC Security Software*

IZZIX Secure SE is software which uses fingerprint for user authentication and also provides finger de/encryption, and system protection (login, screensaver, system lock).

### ● Application

- Login Protection
- File Protection
- Quick System Lock
- Complete Deletion

### ● System Requirements

- OS : MS Windows 2000/XP/Vista/7
- CPU : Pentium 133MHz≤
- HDD : 20MB≤
- Memory : 128≤

## ● IZZIX Secure Pro

*Centralized Fingerprint User Management Solution*

IZZIX Secure Pro is a centralized user management system using fingerprint authentication which is integrated with Microsoft Active Directory user & group management system. It supports independent centralized management.

### ● Features

- Support MS Active Directory
- Support Domain Login
- With one time registration of fingerprint, a domain user can access any client PCs in the same domain.

### ● System Requirements

	IZZIX Secure Pro Client	IZZIX Secure Pro Server
OS	MS Windows 2000/XP/Vista/7	MS Windows 2000/2003/2008 Server
CPU	Pentium 133MHz ≤	Pentium 2.0GHz ≤
HDD	20MB ≤	100MB ≤
RAM	128MB ≤	512MB ≤
DB		Microsoft SQL Server

## ● Fingerex

*Fingerprint Authentication Solution*

Fingerex is a fast and large capacity fingerprint authentication server system.

### ● Features

- Security : When fingerprint data is being transferred on the Internet, all data is encrypted to ensure the security.
- Stability : Fingerex system can be operated for multiple servers. If one server is down, a back-up server from another location can continue to provide the service.
- Expandability : Fingerex system is equipped with dispersed servers, which allows an increase the number of hardware to preserve same efficiency, irrelevant of data size.

### ● System Requirements

	Fingerex Client	Fingerex Server
OS	MS Windows 2000/XP/Vista/7	MS Windows 2000 Server ≤
CPU	Pentium 133MHz ≤	Pentium4 1GHz ≤
Memory	128MB ≤	1GB ≤
HDD	1GB ≤	10GB ≤
Interface	IE 6.0 ≤	IIS5.0
Others		MS-SQL/Access /Oracle (DB Server)

## ● Fingerex-SD

*Fingerprint Security E-mail System*

Fingerex-SD is a fingerprint authentication e-mail security solution integrated with MS Office Outlook.(XP/2003/2007)

### ● System Requirements

	Fingerex-SD Client	Fingerex-SD Server
OS& Service Pack	MS Windows 98SE/ME/2000/XP/2003/Vista/7 Service Pack 6 ≤ for Windows 98/ME	Microsoft Windows 2000/XP Pro/2003 /2008 Microsoft Windows 2000 Service Pack1 ≤
CPU	Pentium 133MHz ≤	Pentium 2GHz ≤
Memory	128MB ≤	512MB ≤
HDD	30MB ≤	200MB ≤
Others	.NET Framework 2.0	.NET Framework 1.1 and .NET Framework 2.0

※ This specification is subject to change without prior notice.

**DIGENT Co., Ltd.**

11th F, Gangnam Center Bldg., #825-13 Yeoksam1-dong, Gangnam-gu, Seoul, 135-934, Korea  
Tel : +82-2-3420-3111 Fax : +82-2-3420-3009 Web : www.digent.com

**DIGENT**